



# Casa Papalotl

## DRIVING DIRECTIONS

From Manzanillo International Airport (ZLO) to Casa Papalotl  
*(Playa de Oro International Airport, Colima, Mexico)*



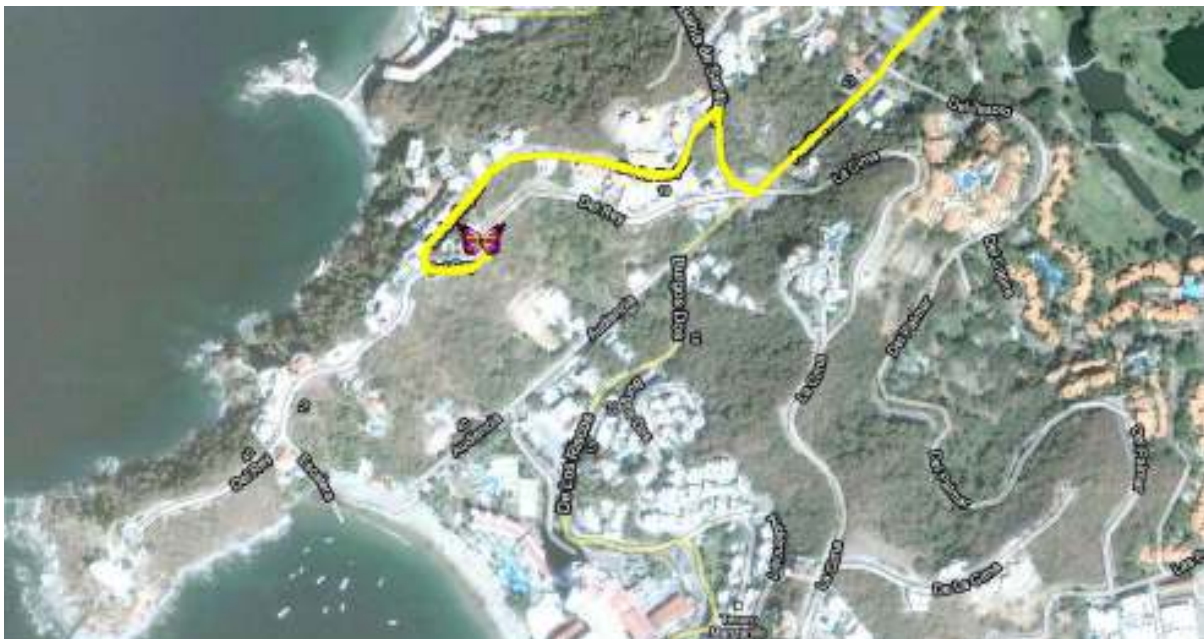
1. Once you land at Manzanillo International Airport (ZLO), drive **north** through the Mexican wilderness to exit the airport grounds.
2. After traveling north for several miles you will come to junction for **Miguel de La Madrid Hurtado** road.



3. Turn right onto **Miguel de La Madrid Hurtado**.
4. Continue on Miguel de La Madrid Hurtado for 20+ minutes.



5. After driving for 20 minutes, you will begin to enter the Santiago Bay area in Manzanillo.
6. Turn **right** on **La Audiencia**.
7. Continue up the hill on La Audiencia.
8. You will eventually come to circular plaza where there will be a four roads connecting.
9. Take a **hard right** onto **Costera Bahía de Santiago**.
10. Take an immediate **left** on **Del La Reyna**.
11. Follow De La Reyna through the residential neighborhood. You will eventually come to the De La Reyna/Del Rey junction.
12. Turn **left** on **Del Rey**.
13. Del Rey will curve to left. *Casa Papalotl will be on your left.*
14. There is a parking area across from the Casa Papalotl garage.





### **IMPORTANT REMINDER**

Driving in Mexico is much different than driving in the United States. In you are not taking a taxi to Casa Papalotl and are planning to drive (Ex: rental car), please be sure to visit a few websites on “Driving in Mexico”:

<http://www.tomzap.com/driving.html>

<http://studenttravel.about.com/od/getontheroad/a/mexicodrive.htm>

[http://www.mexperience.com/guide/essentials/getting\\_around.htm](http://www.mexperience.com/guide/essentials/getting_around.htm)